



## CATEGORIES

Rated out of ten, except for The Winter Scale

### The Winter Scale:

Characters tend to be either cooler or warmer so are ranked out of five according to their appropriate ice or fire scale. Five is most powerful; one is least.

**Ice:** How distant, unapproachable, and closed off a character is from the world and others.

**Fire:** How outgoing and approachable a character is in relation to other people and the world around them.

**Power:** The influence a person has professionally and/or politically.

**Charisma:** The ability to draw people to them with charm/influence.

**Intelligence:** How smart a character is. Purely intellect; not related to learned skills or abilities.

**Empathy:** Willingness to put themselves in other people's shoes regarding their life and situations.



## THE RULES

Shuffle the cards and deal out equal numbers to all players. Everyone picks up their cards in a stack so that they only see their top card.

The player to the dealer's left selects a category of their choosing and reads it aloud.

The categories in which you can compete are:

**Winter Scale, Power, Charisma, Intelligence, Empathy, Bribes/Gifts, Cunning, Ruthlessness, Courage, Sociability, Quick Wit, Ego** and **Total Points**.

Other players will look at their top card and read aloud the value for the selected category. Whoever has the highest value wins all the other top cards of their fellow players and puts them under their own stack.

The winner of each round chooses the category of the next round.

If the values are equal: All players place their card in the middle. The player to the left of the first player announces a category for everyone's next card.

The winner of this next hand wins the cards in the middle too.

When someone owns all the cards, they are pronounced the winner and **Honorary Ice Queen**.



**Bribes/Gifts:** Frequency and rating of the gifts that a character gives to another character.

**Cunning:** How crafty they are at thinking outside the box in non-obvious ways. Street smart rather than book smart.

**Ruthlessness:** Ability to act in an unyielding, unforgiving way to get what they want. Their own interests matter most. Opposite of empathy.

**Courage:** How courageous they are in dangerous situations and when admitting to or expressing feelings.

**Sociability:** Capacity to get on well with people, appreciate the company of others, make contacts quickly, and be easily liked.

**Quick Wit:** The ability to react quickly to a remark or situation with clever words.

**Ego:** A sense of self importance. How important do they feel they are? How much does it affect them if people don't admire them?

**Total Points:** The number in the star is the sum of points on this card.



**ON THE RECORD SERIES**  
**THE RED FILES**  
**UNDER YOUR SKIN**



IOWA

**LAUREN KING**

★ **76** ★

*Daily Sentinel journalist*

Winter Scale: 4



Power: 6

Charisma: 6

Intelligence: 8

Empathy: 7

Bribes/Gifts: 5

Cunning: 8

Ruthlessness: 3

Courage: 8

Sociability: 8

Quick wit: 9

Ego: 4

**LEE WINTER**

**ON THE RECORD SERIES**  
**THE RED FILES**  
**UNDER YOUR SKIN**



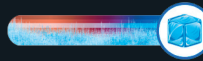
CAUSTIC  
 QUEEN

**CATHERINE AYERS**

★ **78** ★

*Ex Washington DC political correspondent /  
 celebrity gossip writer*

Winter Scale: 5



Power: 7

Charisma: 8

Intelligence: 10

Empathy: 4

Bribes/Gifts: 4

Cunning: 7

Ruthlessness: 6

Courage: 7

Sociability: 3

Quick wit: 10

Ego: 7

**LEE WINTER**

**ON THE RECORD SERIES**  
**THE RED FILES**  
**UNDER YOUR SKIN**



MARI

**MARIELLA SLATER**

★ **85** ★

*Publicist to LA's top celebrities*

Winter Scale: 5



Power: 6

Charisma: 10

Intelligence: 8

Empathy: 5

Bribes/Gifts: 3

Cunning: 9

Ruthlessness: 8

Courage: 5

Sociability: 10

Quick wit: 9

Ego: 7

**LEE WINTER**

**ON THE RECORD SERIES**  
**THE RED FILES**  
**UNDER YOUR SKIN**



JOSH  
 LAUREN'S BFF

**JOSHUA BENNETT**

★ **77** ★

*Accessories designer*

Winter Scale: 4



Power: 1

Charisma: 10

Intelligence: 7

Empathy: 6

Bribes/Gifts: 6

Cunning: 5

Ruthlessness: 4

Courage: 7

Sociability: 10

Quick wit: 9

Ego: 8

**LEE WINTER**



ICE PACK



ICE PACK



ICE PACK



ICE PACK

**THE VILLIANS SERIES**  
THE FIXER  
CHAOS AGENT



TILLY

**OTTILIE ZIMMERMANN**

★ 72 ★

*Michelle's personal assistant at The Fixers*

Winter Scale: 0



Power: 10

Charisma: 8

Intelligence: 10

Empathy: 3

Bribes/Gifts: 1

Cunning: 9

Ruthlessness: 10

Courage: 1

Sociability: 7

Quick wit: 8

Ego: 5

**LEE WINTER**

**THE VILLIANS SERIES**  
THE FIXER  
CHAOS AGENT



EDEN'S BFF

**AGGIE TEO**

★ 64 ★

*Social worker / part-time social justice fighter / landlord of Kevin*

Winter Scale: 5



Power: 1

Charisma: 7

Intelligence: 6

Empathy: 10

Bribes/Gifts: 8

Cunning: 2

Ruthlessness: 0

Courage: 7

Sociability: 10

Quick wit: 7

Ego: 1

**LEE WINTER**

**THE VILLIANS SERIES**  
THE FIXER  
CHAOS AGENT



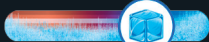
THE MAYOR

**FRANCINE WILSON**

★ 83 ★

*Mayor of Wingapo / property developer*

Winter Scale: 4



Power: 6

Charisma: 10

Intelligence: 7

Empathy: 0

Bribes/Gifts: 0

Cunning: 9

Ruthlessness: 10

Courage: 8

Sociability: 9

Quick wit: 10

Ego: 10

**LEE WINTER**

**THE VILLIANS SERIES**  
THE FIXER  
CHAOS AGENT



THE PANDA

**EDEN LAWLESS**

★ 77 ★

*Freelance social justice warrior / professional protester*

Winter Scale: 5



Power: 3

Charisma: 8

Intelligence: 7

Empathy: 10

Bribes/Gifts: 10

Cunning: 7

Ruthlessness: 1

Courage: 8

Sociability: 10

Quick wit: 6

Ego: 2

**LEE WINTER**



ICE PACK



ICE PACK



ICE PACK



ICE PACK

**THE VILLIANS SERIES**  
THE FIXER  
CHAOS AGENT



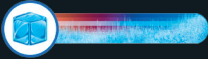
O'BRIAN

PHELIM O'BRIAN

★ 65 ★

*The Fixer's enforcer / ex top amateur boxer*

Winter Scale: 1



Power: 7

Charisma: 5

Intelligence: 5

Empathy: 6

Bribes/Gifts: 2

Cunning: 8

Ruthlessness: 8

Courage: 7

Sociability: 6

Quick wit: 3

Ego: 7

**LEE WINTER**

**THE VILLIANS SERIES**  
THE FIXER  
CHAOS AGENT



SAFTA

HANNAH

★ 75 ★

*Michelle's grandmother / former dancer*

Winter Scale: 4



Power: 1

Charisma: 8

Intelligence: 9

Empathy: 10

Bribes/Gifts: 8

Cunning: 7

Ruthlessness: 1

Courage: 5

Sociability: 10

Quick wit: 9

Ego: 3

**LEE WINTER**

**THE VILLIANS SERIES**  
THE FIXER  
CHAOS AGENT



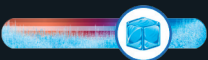
THE SENATOR

PHYLLIS KENSINGTON

★ 80 ★

*Senior Senator of Massachusetts*

Winter Scale: 4



Power: 8

Charisma: 10

Intelligence: 8

Empathy: 0

Bribes/Gifts: 0

Cunning: 10

Ruthlessness: 10

Courage: 3

Sociability: 9

Quick wit: 8

Ego: 10

**LEE WINTER**

**THE VILLIANS SERIES**  
THE FIXER  
CHAOS AGENT



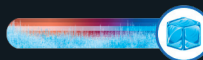
THE CEO

MICHELLE HASTINGS

★ 81 ★

*CEO of The Fixers / formerly FBI operative*

Winter Scale: 5



Power: 9

Charisma: 7

Intelligence: 9

Empathy: 5

Bribes/Gifts: 6

Cunning: 9

Ruthlessness: 9

Courage: 2

Sociability: 5

Quick wit: 8

Ego: 7

**LEE WINTER**



ICE PACK



ICE PACK



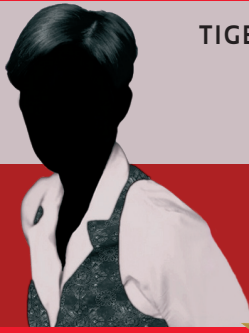
ICE PACK



ICE PACK



THE TRUTH COLLECTION  
THE BRUTAL TRUTH  
THE AWKWARD TRUTH



TIGER SHARK

★ 84 ★

ELENA BARTELL

Media mogul and COO of Bartell Corporation

Winter Scale: 5



Power: 10

Charisma: 10

Intelligence: 9

Empathy: 5

Bribes/Gifts: 2

Cunning: 9

Ruthlessness: 7

Courage: 7

Sociability: 3

Quick wit: 9

Ego: 8

LEE WINTER

THE TRUTH COLLECTION  
THE BRUTAL TRUTH  
THE AWKWARD TRUTH



MADDIE

★ 71 ★

MADELEINE GREY

Junior crime reporter at Hudson Metro News /  
blog writer of Aliens of New York

Winter Scale: 5



Power: 3

Charisma: 6

Intelligence: 8

Empathy: 9

Bribes/Gifts: 10

Cunning: 4

Ruthlessness: 2

Courage: 10

Sociability: 5

Quick wit: 7

Ego: 2

LEE WINTER

THE TRUTH COLLECTION  
THE BRUTAL TRUTH  
THE AWKWARD TRUTH



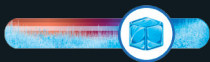
ARCH RIVAL

★ 71 ★

EMMANUELLE LECOQ

Editor-in-chief of CQ magazine

Winter Scale: 4



Power: 7

Charisma: 5

Intelligence: 6

Empathy: 1

Bribes/Gifts: 0

Cunning: 10

Ruthlessness: 10

Courage: 8

Sociability: 5

Quick wit: 5

Ego: 10

LEE WINTER

THE TRUTH COLLECTION  
THE BRUTAL TRUTH  
THE AWKWARD TRUTH



ELENA'S BFF

★ 85 ★

PERRY MARKS

Style International's global art director

Winter Scale: 3



Power: 7

Charisma: 7

Intelligence: 9

Empathy: 6

Bribes/Gifts: 2

Cunning: 8

Ruthlessness: 7

Courage: 8

Sociability: 9

Quick wit: 10

Ego: 9

LEE WINTER



THE ASSASSIN EXPERIENCE  
REQUIEM FOR  
IMMORTALS



STEPMOTHER



LOLA SWEETMAN

★ 79 ★

*Mobster's wife / Requiem's stepmother*

Winter Scale: 5



Power: 10

Charisma: 10

Intelligence: 7

Empathy: 0

Bribes/Gifts: 0

Cunning: 10

Ruthlessness: 10

Courage: 3

Sociability: 6

Quick wit: 8

Ego: 10

LEE WINTER

THE ASSASSIN EXPERIENCE  
REQUIEM  
FOR IMMORTALS



ICY ASSASSIN

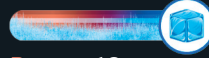


NATALYA TSVETNENKO /  
REQUIEM

★ 79 ★

*Professional cellist / underworld assassin*

Winter Scale: 5



Power: 10

Charisma: 9

Intelligence: 10

Empathy: 2

Bribes/Gifts: 2

Cunning: 10

Ruthlessness: 9

Courage: 8

Sociability: 1

Quick wit: 3

Ego: 10

LEE WINTER

THE ASSASSIN EXPERIENCE  
REQUIEM FOR  
IMMORTALS



NABI



SONJA

★ 59 ★

*Bodyguard for Ken Lee's gang*

Winter Scale: 2



Power: 6

Charisma: 6

Intelligence: 6

Empathy: 3

Bribes/Gifts: 0

Cunning: 8

Ruthlessness: 8

Courage: 10

Sociability: 2

Quick wit: 2

Ego: 6

LEE WINTER

THE ASSASSIN EXPERIENCE  
REQUIEM FOR  
IMMORTALS



MOUSE



ALISON RYAN

★ 62 ★

*Government worker*

Winter Scale: 4



Power: 3

Charisma: 3

Intelligence: 8

Empathy: 8

Bribes/Gifts: 4

Cunning: 7

Ruthlessness: 2

Courage: 10

Sociability: 6

Quick wit: 4

Ego: 3

LEE WINTER



ICE PACK



ICE PACK



ICE PACK



ICE PACK

**FIRE MEETS ICE**  
HOTEL QUEENS



ICE QUEEN

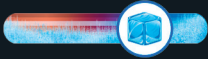


AMELIA DUXTON

★ 59 ★

*Vice President at Hotel Duxton International: Europe*

Winter Scale: 4



Power: 7

Charisma: 3

Intelligence: 10

Empathy: 3

Bribes/Gifts: 1

Cunning: 3

Ruthlessness: 7

Courage: 8

Sociability: 1

Quick wit: 7

Ego: 5

**LEE WINTER**

**FIRE MEETS ICE**  
HOTEL QUEENS



KAI  
FIRE QUEEN



KAIDA FISHER

★ 97 ★

*Vice President at Grand Millennium Hotels*

Winter Scale: 5



Power: 7

Charisma: 10

Intelligence: 8

Empathy: 8

Bribes/Gifts: 2

Cunning: 10

Ruthlessness: 9

Courage: 10

Sociability: 10

Quick wit: 10

Ego: 8

**LEE WINTER**

**FIRE MEETS ICE**  
HOTEL QUEENS



Dating Quinn



MILLIE VALENTINE

★ 63 ★

*Kai's assistant at Grand Millennium Hotels*

Winter Scale: 4



Power: 6

Charisma: 5

Intelligence: 10

Empathy: 8

Bribes/Gifts: 1

Cunning: 3

Ruthlessness: 5

Courage: 8

Sociability: 3

Quick wit: 7

Ego: 3

**LEE WINTER**

**FIRE MEETS ICE**  
HOTEL QUEENS



Dating Millie



QUINN HARTMAN

★ 77 ★

*Amelia's deputy at Hotel Duxton*

Winter Scale: 4



Power: 7

Charisma: 8

Intelligence: 10

Empathy: 8

Bribes/Gifts: 3

Cunning: 3

Ruthlessness: 6

Courage: 8

Sociability: 7

Quick wit: 7

Ego: 6

**LEE WINTER**



ICE PACK



ICE PACK



ICE PACK



ICE PACK

THE TRUTH COLLECTION  
THE BRUTAL TRUTH  
THE AWKWARD TRUTH



DEPUTY  
MEDIA MOGUL

★ 81 ★

FELICITY SIMMONS

Corporate lawyer and Deputy COO of Bartell Corporation

Winter Scale: 3



Power: 9  
Charisma: 5  
Intelligence: 9  
Empathy: 3

Bribes/Gifts: 9  
Cunning: 7  
Ruthlessness: 9  
Courage: 7  
Sociability: 2  
Quick wit: 9  
Ego: 9

LEE WINTER

THE TRUTH COLLECTION  
THE BRUTAL TRUTH  
THE AWKWARD TRUTH



COOPER

★ 68 ★

SANDY COOPER

Veterinarian at Living Ruff

Winter Scale: 4



Power: 2  
Charisma: 8  
Intelligence: 7  
Empathy: 10

Bribes/Gifts: 7  
Cunning: 2  
Ruthlessness: 2  
Courage: 7  
Sociability: 7  
Quick wit: 6  
Ego: 6

LEE WINTER

THE TRUTH COLLECTION  
THE BRUTAL TRUTH  
THE AWKWARD TRUTH



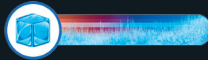
WIFE OF  
HARVEY

★ 83 ★

ROSALIND STONE

Socialite and founder of Living Ruff

Winter Scale: 1



Power: 7  
Charisma: 9  
Intelligence: 9  
Empathy: 7

Bribes/Gifts: 0  
Cunning: 9  
Ruthlessness: 8  
Courage: 9  
Sociability: 8  
Quick wit: 8  
Ego: 8

LEE WINTER

THE TRUTH COLLECTION  
THE BRUTAL TRUTH  
THE AWKWARD TRUTH



ROSALIND'S  
HUSBAND

★ 41 ★

HARVEY CLIFFORD

Director of Living Ruff

Winter Scale: 3



Power: 3  
Charisma: 3  
Intelligence: 5  
Empathy: 10

Bribes/Gifts: 0  
Cunning: 1  
Ruthlessness: 0  
Courage: 5  
Sociability: 8  
Quick wit: 2  
Ego: 1

LEE WINTER



ICE PACK



ICE PACK



ICE PACK



ICE PACK



**A HOLLYWOOD STORY**  
BREAKING CHARACTER



GRACIE-O

GRACE CHRISTIE-OBERON ★ 73 ★

*Renowned British acting legend / Hollywood actress*

Winter Scale: 4



Power: 7

Charisma: 10

Intelligence: 5

Empathy: 0

Bribes/Gifts: 0

Cunning: 8

Ruthlessness: 10

Courage: 7

Sociability: 6

Quick wit: 6

Ego: 10

**LEE WINTER**

**A HOLLYWOOD STORY**  
BREAKING CHARACTER



SUNSHINE

SUMMER HAYES ★ 80 ★

*Ex-child star and now actress on Choosing Hope*

Winter Scale: 5



Power: 6

Charisma: 9

Intelligence: 8

Empathy: 10

Bribes/Gifts: 7

Cunning: 3

Ruthlessness: 1

Courage: 8

Sociability: 8

Quick wit: 9

Ego: 6

**LEE WINTER**

**A HOLLYWOOD STORY**  
BREAKING CHARACTER



SUMMER'S MOTHER

SKYE STORM ★ 81 ★

*Renowned movie costume designer*

Winter Scale: 5



Power: 3

Charisma: 10

Intelligence: 9

Empathy: 10

Bribes/Gifts: 4

Cunning: 8

Ruthlessness: 3

Courage: 8

Sociability: 10

Quick wit: 6

Ego: 5

**LEE WINTER**

**A HOLLYWOOD STORY**  
BREAKING CHARACTER



BESS

ELIZABETH THORNTON ★ 60 ★

*Icy British star of American medical drama Choosing Hope*

Winter Scale: 3



Power: 7

Charisma: 10

Intelligence: 8

Empathy: 6

Bribes/Gifts: 3

Cunning: 2

Ruthlessness: 1

Courage: 2

Sociability: 3

Quick wit: 9

Ego: 6

**LEE WINTER**



ICE PACK



ICE PACK



ICE PACK



ICE PACK